



# Innovative Vision Solution for Safer Driving

---



AOTOP TECH CO., LTD.

# AI 360° Surround View Monitoring System

When commercial vehicles or large trucks drive or reverse on crowded roads, the numerous blind spots can lead to collisions, posing a serious threat to the safety of vulnerable road users such as pedestrians, cyclists, and motorcyclists.

Designed specifically for trucks, buses, and special vehicles, this 360-degree panoramic imaging system features proprietary stitching algorithms, high integration, and a wide temperature range, operating from -20 to 70°C.



## VOX8-360

- 3D bird view around panoramic view, no blind spots around 360°
- Support AI Pedestrian & Vehicle Detection
- Supports SD card storage (8G-512G)
- Supports multiple video outputs, including CVBS/HDMI/VGA/AHD.
- 10.1" high-definition display, HDMI input, Full screen touch
- Supports 4~8 channels AHD camera
- GPS speed measurement function

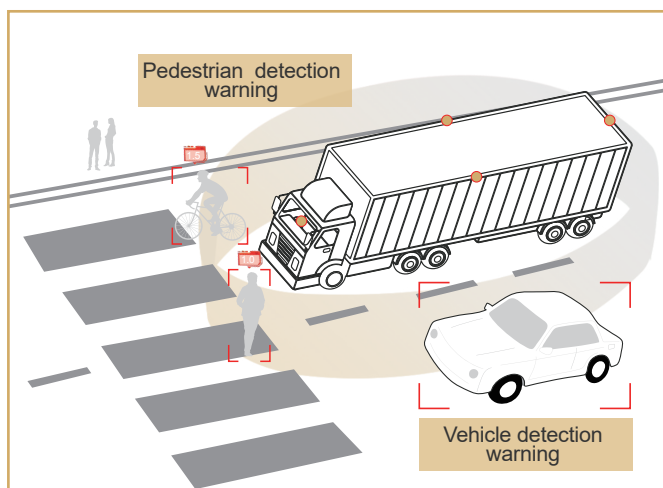
## Vehicle Pedestrian Detection:

Built-in AI algorithms for 360-degree blind spot detection. It alerts drivers through the cabin monitor (visual)+ intelligent voice alert (audible), providing a comprehensive warning system. Additionally, it connects to external Acousto-optic alarm to warn pedestrians or non-motor vehicles entering the blind spot, enhancing overall driving safety.

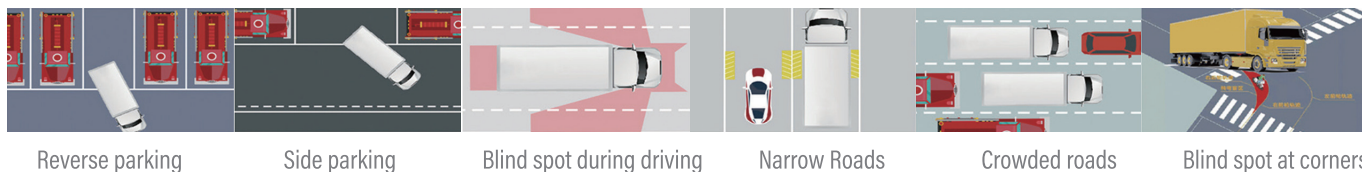


## Content :

1 x 360box; 4 x fish-eye camera; 1 x HDMI monitor;  
 1 x remote control; 1 x Intelligent Voice alert; 1 x GPS antenna  
 1 x power cable; 1 x 3M/5M/7M/15M extension cable  
 1 x external Acousto-optic alarm(optional); 4 x Calibration cloth(optional)

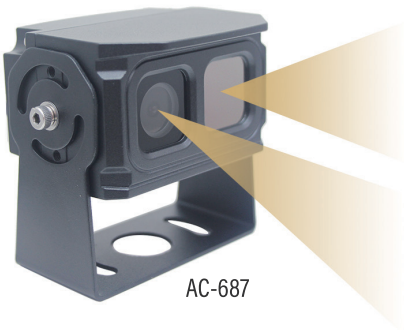


## Application:



# AI Thermal Infrared Imaging Camera System

The thermal infrared imaging camera is essential in conditions of low visibility and inadequate lighting, such as rain, fog, nighttime, or glare. These environmental challenges hinder drivers' ability to clearly identify pedestrians and vehicles, increasing the risk of safety accidents. Additionally, in complex engineering environments with challenging road conditions, traditional driving methods are insufficient for preemptively predicting safety risks.



- Thermal Infrared Camera/ Visible Light Camera
- Dual lens design, split display in the monitor
- Built-in AI pedestrian & vehicle detection algorithm
- Breaking the Night Barrier
- Ultra Long Range
- Anti-Far Glare Interference
- Fog, Smoke & Haze Transmission
- Resolution: 256\*192/384\*288



Single View Mode



Split View Mode

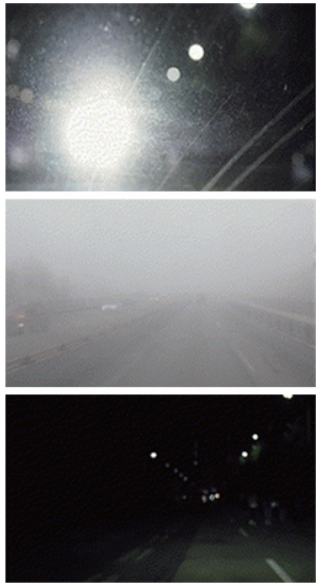


PIP Mode



PIP Mode

The thermal infrared camera possesses superior penetration capabilities, allowing it to overcome nighttime obstacles and effectively prevent glare from high beams, while penetrating fog, smoke, and haze. Additionally, it supports human and vehicle recognition algorithms, enabling it to issue timely alerts and provide enhanced safety.

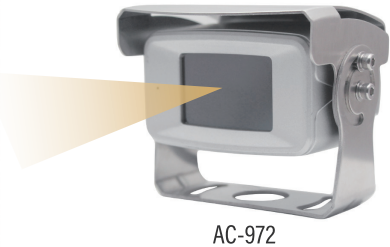


VS



VS

VS



- 1 CM-709HQ2  
TIC monitor
- 2 Camera:  
Thermal Imaging Camera



## AI 1080P AI Monitor System



CM-108HQ(BSD)

- 10.1" high-definition display
- Full screen touch



CM-718HQ(BSD)

- 7" high-definition display
- Full screen touch



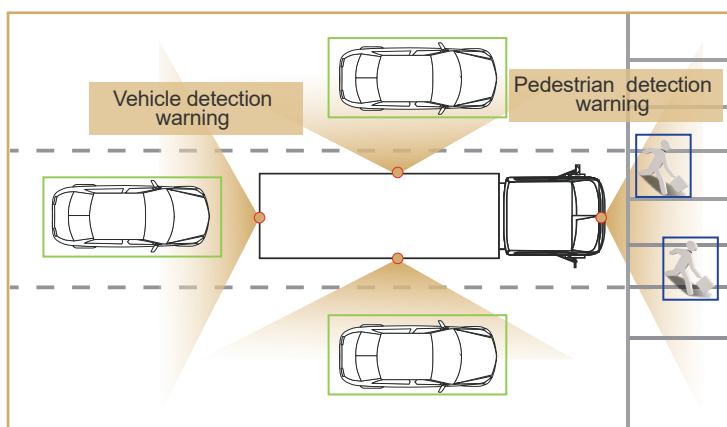
CM-709HQ(BSD)

- 7" high-definition display
- Full screen touch



R-700H(BSD)

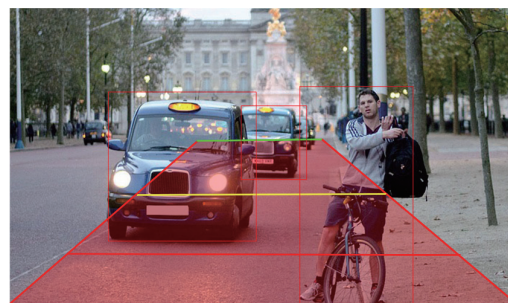
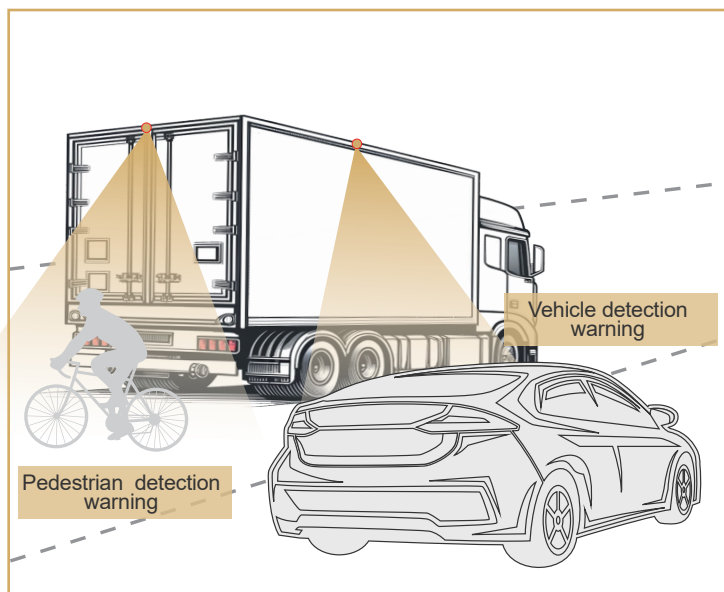
- 7" high-definition display
- Full screen touch



### Feature:

- 7" / 10.1" high-definition display, 4CH video inputs
- Support 720P/1080P cameras
- Storage up to 256 GB, support loop recording
- Support 3/4 CH BSD functions;  
(AI Pedestrian & Vehicle Detection)
- Full screen touch
- 4 channels individually real-time recording
- GPS speed measurement function

## AI 1080P AI Camera System



AC-301(AI)



AC-389(AI)

# AI Full Display Mirror System



T95

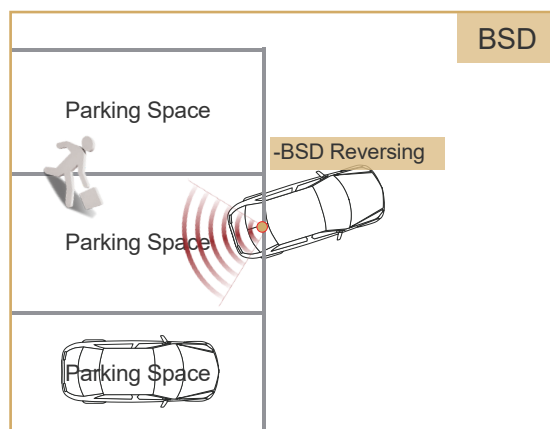
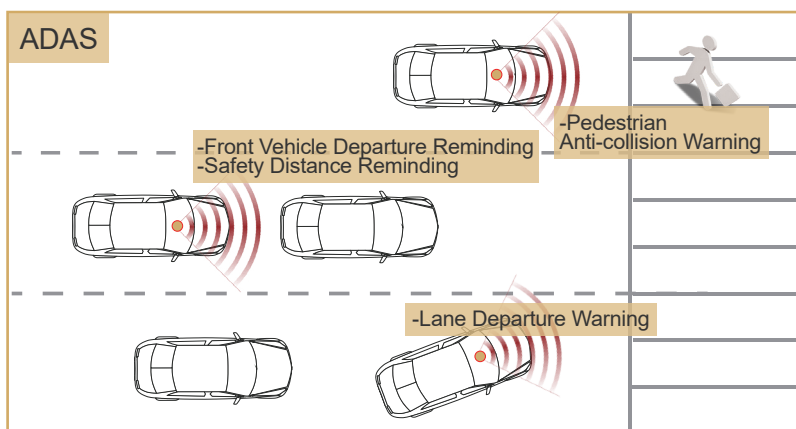
- 8.88" high-definition display
- Full screen touch



T99

- 10.88" high-definition display
- Full screen touch

- Equip with ADAS technology, it can remind driver safety distance, lane-departure, pedestrian anti-collision etc.
- Equip with BSD technology, it will alert when vehicle or pedestrian is too close when parking.
- Full screen display; Touch Screen; Dual DVR recording; GPS positioning function;
- 2 types rear camera for option, support inside mounting or outside mounting, Rear view camera 1080P 60fps;
- Over 100+ brackets;



# Sideview Mirror Blind Zone Assist System



VD-1237

Long-arm Camera(suitable for big truck)



VD-1237

Short-arm Camera(suitable for commercial coach/bus)



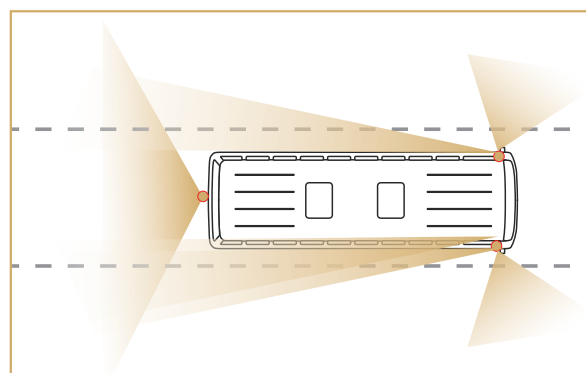
Box-VD1237:  
Video split box



CH307B2:  
Rear view camera



CB-002-Y01:  
Y cable optional to display backup camera in 2 side mirror monitors)





## 2.4GHz Digital Wireless System/ Wi-Fi system



CM-1010MDW-HD

- 1/2/4CH
- 1080P(DVR)



CM-709MDW-HD

- 1/2/4CH
- 720P/1080P(DVR)



CM-718MDW-HD

- 1/2/4CH
- 1080P(DVR)



CM-708MDW-HD

- 1/2/4CH
- 1080P(DVR)



CM-500MDW-HD

- 1/2/4CH
- 720P



AC-301MDW-HD



AC-301MDW-HD



AC-302MDW-HD



AC-307MDW-HD



AC-977MDW-HD



TX-100HD/RX-100HD



AC-307MDW

- Magnet base adsorption installation
- With built-in battery
- Support both IOS / android system
- Resolution: 640\*480



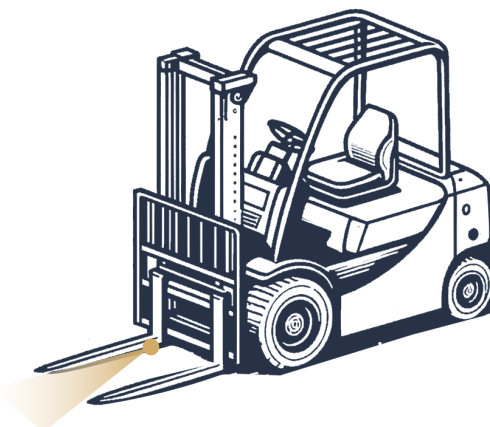
## 1080P Wireless Forklift Camera System



AC-978MDW-HD

CM-709MDW-HD

- laser positioning help to operate the fork accurately
- magnetic basement to save time on wiring
- rechargeable and easy power supply with external battery



Battery box  
(optional)



Buck converter  
(optional)

# 1080P HD Carplay Monitors



CM-108HQ(Carplay)  
 > 10.1" high-definition display  
 > Full screen touch



CM-718HQ(Carplay)  
 > 7" high-definition display  
 > Full screen touch



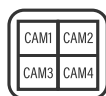
CM-709HQ(Carplay)  
 > 7" high-definition display  
 > Full screen touch



R-700H(Carplay)  
 > 7" high-definition display  
 > Full screen touch



Touch screen



Split screen



Video input



DVR(MAX 256G)



AHD signal



CarPlay



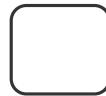
Android Auto



FM Transmitting



Bluetooth



Loop Recording

# HD 1080P HD Quad-View Monitors



CM-500HQ



CM-560M-AHD



CM-620M-AHD



CM-718HQ



CM-708WHQ



CM-715HQ



CM-709HQ



CM-700HQ



CM-1010HQ



CM-1010HQ(8CH)



CM-108HQ(2CH)



CM-108HQ(6CH)

## HD 1080P HD Cameras



CH307FE



CH307B2



AC-972



AC-976



AC-980



AC-981



AC-982



AC-983



AC-979



AC-970



AC-301/AHD



AC-302/AHD



AC-303/AHD



AC-388/AHD



AC-389/AHD



## Accessories



➤ Bracket



➤ Adapter cable



➤ Trailer cable



➤ Extension cable



➤ Monitor and camera cable connector

## AOTOP TECH CO., LTD.



7-8th Floor, 4 Bldg., Honghui Industrial Park, Liuxian 2 Road, No.68 Zone,  
Bao'an District, Shenzhen, China 518101



sales@aotop.com



+86-0755-85279353/0755-85279352/0755-85279287



IATF 16949:2016/ISO 9001/CE/E-Mark/FCC/RoHS/UKCA/R7



www.aotop.com



www.szjeavox.com